




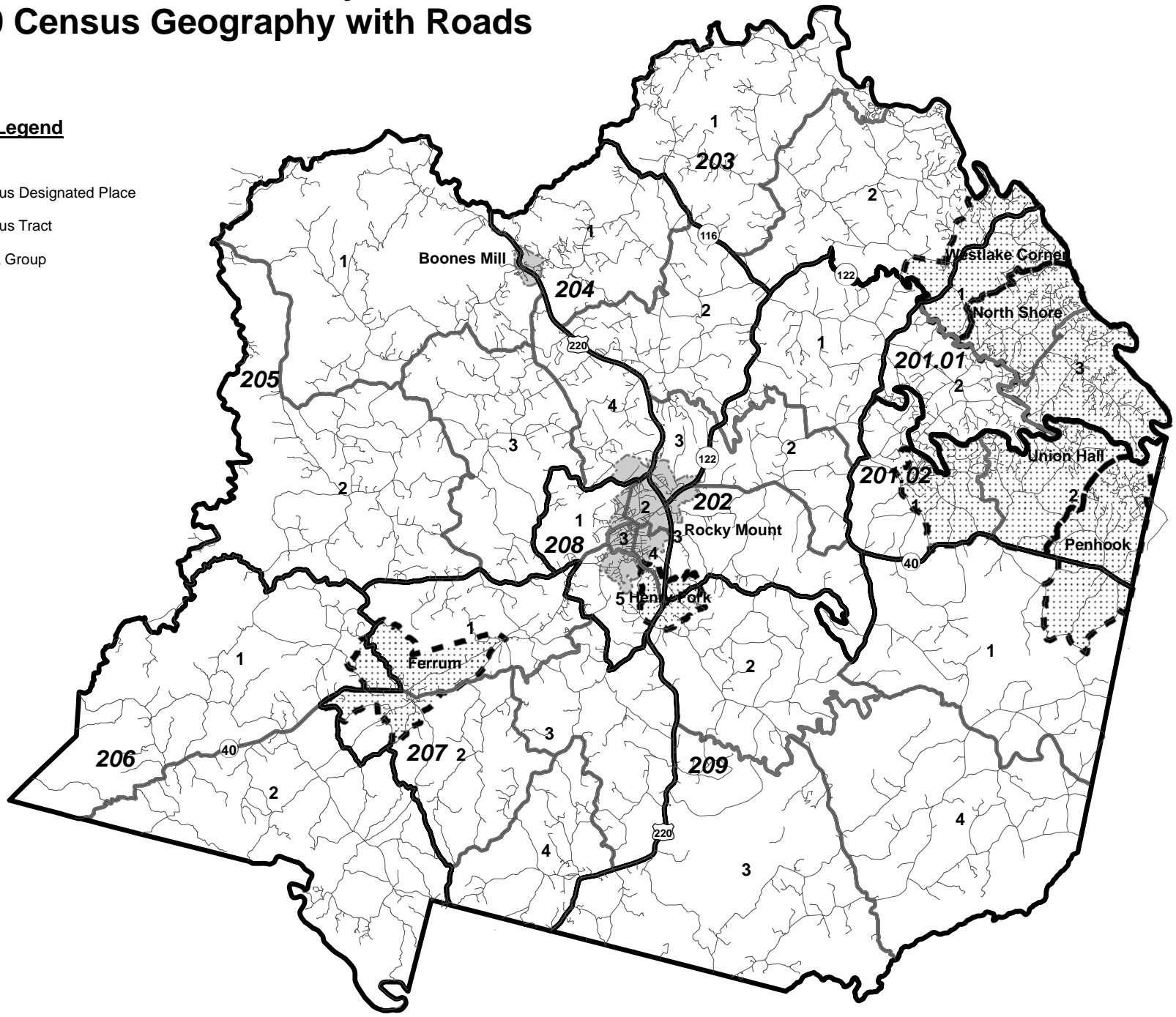


# Franklin County 2010 Census Geography with Roads



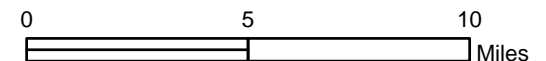
## Legend

-  Town
-  Census Designated Place
-  Census Tract
-  Block Group
-  Road



Source: 2010 Census TIGER Files, U.S. Census Bureau.

Prepared by West Piedmont Planning District Commission, March 2011.



**QT-PL - Franklin County, Virginia: Race, Hispanic or Latino, Age, and Housing Occupancy: 2010**

**2010 Census Redistricting Data (Public Law 94-171) Summary File**

NOTE: For information on confidentiality protection, nonsampling error, and definitions, see <http://www.census.gov/prod/cen2010/pl94-171.pdf>

Subject	Total		18 years and over	
	Number	Percent	Number	Percent
<b>POPULATION</b>				
Total population	56,159	100.0	44,482	100.0
<b>RACE</b>				
One race	55,472	98.8	44,211	99.4
White	49,699	88.5	39,719	89.3
Black or African American	4,575	8.1	3,662	8.2
American Indian and Alaska Native	150	0.3	114	0.3
Asian	252	0.4	189	0.4
Native Hawaiian and Other Pacific Islander	15	0.0	13	0.0
Some Other Race	781	1.4	514	1.2
Two or More Races	687	1.2	271	0.6
<b>HISPANIC OR LATINO AND RACE</b>				
Hispanic or Latino (of any race)	1,424	2.5	863	1.9
Not Hispanic or Latino	54,735	97.5	43,619	98.1
One race	54,130	96.4	43,384	97.5
White	49,072	87.4	39,351	88.5
Black or African American	4,541	8.1	3,637	8.2
American Indian and Alaska Native	112	0.2	87	0.2
Asian	251	0.4	188	0.4
Native Hawaiian and Other Pacific Islander	10	0.0	10	0.0
Some Other Race	144	0.3	111	0.2
Two or More Races	605	1.1	235	0.5
<b>HOUSING UNITS</b>				
Total housing units	29,315	100.0		
<b>OCCUPANCY STATUS</b>				
Occupied housing units	22,780	77.7		
Vacant housing units	6,535	22.3		

(X) Not applicable

Source: U.S. Census Bureau, 2010 Census.

2010 Census Redistricting Data (Public Law 94-171) Summary File, Tables P1, P2, P3, P4, H1.



QT-PL

Race, Hispanic or Latino, Age, and Housing Occupancy: 2010

2010 Census Redistricting Data (Public Law 94-171) Summary File

NOTE: For information on confidentiality protection, nonsampling error, and definitions, see <http://www.census.gov/prod/cen2010/pl94-171.pdf>

GEO: Boones Mill town, Virginia

Subject	Total		18 years and over	
	Number	Percent	Number	Percent
<b>POPULATION</b>				
Total population	239	100.0	193	100.0
<b>RACE</b>				
One race	235	98.3	190	98.4
White	225	94.1	182	94.3
Black or African American	9	3.8	7	3.6
American Indian and Alaska Native	1	0.4	1	0.5
Asian	0	0.0	0	0.0
Native Hawaiian and Other Pacific Islander	0	0.0	0	0.0
Some Other Race	0	0.0	0	0.0
Two or More Races	4	1.7	3	1.6
<b>HISPANIC OR LATINO AND RACE</b>				
Hispanic or Latino (of any race)	0	0.0	0	0.0
Not Hispanic or Latino	239	100.0	193	100.0
One race	235	98.3	190	98.4
White	225	94.1	182	94.3
Black or African American	9	3.8	7	3.6
American Indian and Alaska Native	1	0.4	1	0.5
Asian	0	0.0	0	0.0
Native Hawaiian and Other Pacific Islander	0	0.0	0	0.0
Some Other Race	0	0.0	0	0.0
Two or More Races	4	1.7	3	1.6
<b>HOUSING UNITS</b>				
Total housing units	127	100.0		
<b>OCCUPANCY STATUS</b>				
Occupied housing units	107	84.3		
Vacant housing units	20	15.7		

(X) Not applicable

Source: U.S. Census Bureau, 2010 Census.

2010 Census Redistricting Data (Public Law 94-171) Summary File, Tables P1, P2, P3, P4, H1.



QT-PL

Race, Hispanic or Latino, Age, and Housing Occupancy: 2010

2010 Census Redistricting Data (Public Law 94-171) Summary File

NOTE: For information on confidentiality protection, nonsampling error, and definitions, see <http://www.census.gov/prod/cen2010/pl94-171.pdf>

GEO: Ferrum CDP, Virginia

Subject	Total		18 years and over	
	Number	Percent	Number	Percent
<b>POPULATION</b>				
Total population	2,043	100.0	1,811	100.0
<b>RACE</b>				
One race	2,029	99.3	1,803	99.6
White	1,419	69.5	1,228	67.8
Black or African American	444	21.7	432	23.9
American Indian and Alaska Native	13	0.6	6	0.3
Asian	13	0.6	13	0.7
Native Hawaiian and Other Pacific Islander	1	0.0	1	0.1
Some Other Race	139	6.8	123	6.8
Two or More Races	14	0.7	8	0.4
<b>HISPANIC OR LATINO AND RACE</b>				
Hispanic or Latino (of any race)	70	3.4	48	2.7
Not Hispanic or Latino	1,973	96.6	1,763	97.3
One race	1,962	96.0	1,757	97.0
White	1,396	68.3	1,211	66.9
Black or African American	440	21.5	428	23.6
American Indian and Alaska Native	13	0.6	6	0.3
Asian	13	0.6	13	0.7
Native Hawaiian and Other Pacific Islander	1	0.0	1	0.1
Some Other Race	99	4.8	98	5.4
Two or More Races	11	0.5	6	0.3
<b>HOUSING UNITS</b>				
Total housing units	534	100.0		
<b>OCCUPANCY STATUS</b>				
Occupied housing units	433	81.1		
Vacant housing units	101	18.9		

(X) Not applicable

Source: U.S. Census Bureau, 2010 Census.

2010 Census Redistricting Data (Public Law 94-171) Summary File, Tables P1, P2, P3, P4, H1.



QT-PL

Race, Hispanic or Latino, Age, and Housing Occupancy: 2010

2010 Census Redistricting Data (Public Law 94-171) Summary File

NOTE: Change to the Virginia 2010 P.L. 94-171 Summary File data as delivered

NOTE: For information on confidentiality protection, nonsampling error, and definitions, see <http://www.census.gov/prod/cen2010/pl94-171.pdf>

GEO: Henry Fork CDP, Virginia

Subject	Total		18 years and over	
	Number	Percent	Number	Percent
<b>POPULATION</b>				
Total population	1,234	100.0	904	100.0
<b>RACE</b>				
One race	1,191	96.5	893	98.8
White	833	67.5	637	70.5
Black or African American	231	18.7	169	18.7
American Indian and Alaska Native	12	1.0	11	1.2
Asian	1	0.1	1	0.1
Native Hawaiian and Other Pacific Islander	0	0.0	0	0.0
Some Other Race	114	9.2	75	8.3
Two or More Races	43	3.5	11	1.2
<b>HISPANIC OR LATINO AND RACE</b>				
Hispanic or Latino (of any race)	176	14.3	111	12.3
Not Hispanic or Latino	1,058	85.7	793	87.7
One race	1,024	83.0	786	86.9
White	790	64.0	614	67.9
Black or African American	229	18.6	168	18.6
American Indian and Alaska Native	3	0.2	3	0.3
Asian	1	0.1	1	0.1
Native Hawaiian and Other Pacific Islander	0	0.0	0	0.0
Some Other Race	1	0.1	0	0.0
Two or More Races	34	2.8	7	0.8
<b>HOUSING UNITS</b>				
Total housing units	551	100.0		
<b>OCCUPANCY STATUS</b>				
Occupied housing units	483	87.7		
Vacant housing units	68	12.3		

(X) Not applicable

Source: U.S. Census Bureau, 2010 Census.

2010 Census Redistricting Data (Public Law 94-171) Summary File, Tables P1, P2, P3, P4, H1.



QT-PL

Race, Hispanic or Latino, Age, and Housing Occupancy: 2010

2010 Census Redistricting Data (Public Law 94-171) Summary File

NOTE: For information on confidentiality protection, nonsampling error, and definitions, see <http://www.census.gov/prod/cen2010/pl94-171.pdf>

GEO: North Shore CDP, Virginia

Subject	Total		18 years and over	
	Number	Percent	Number	Percent
<b>POPULATION</b>				
Total population	3,094	100.0	2,707	100.0
<b>RACE</b>				
One race	3,082	99.6	2,702	99.8
White	3,012	97.3	2,646	97.7
Black or African American	40	1.3	34	1.3
American Indian and Alaska Native	16	0.5	10	0.4
Asian	8	0.3	6	0.2
Native Hawaiian and Other Pacific Islander	0	0.0	0	0.0
Some Other Race	6	0.2	6	0.2
Two or More Races	12	0.4	5	0.2
<b>HISPANIC OR LATINO AND RACE</b>				
Hispanic or Latino (of any race)	31	1.0	20	0.7
Not Hispanic or Latino	3,063	99.0	2,687	99.3
One race	3,053	98.7	2,683	99.1
White	2,990	96.6	2,634	97.3
Black or African American	40	1.3	34	1.3
American Indian and Alaska Native	15	0.5	9	0.3
Asian	8	0.3	6	0.2
Native Hawaiian and Other Pacific Islander	0	0.0	0	0.0
Some Other Race	0	0.0	0	0.0
Two or More Races	10	0.3	4	0.1
<b>HOUSING UNITS</b>				
Total housing units	2,950	100.0		
<b>OCCUPANCY STATUS</b>				
Occupied housing units	1,425	48.3		
Vacant housing units	1,525	51.7		

(X) Not applicable

Source: U.S. Census Bureau, 2010 Census.

2010 Census Redistricting Data (Public Law 94-171) Summary File, Tables P1, P2, P3, P4, H1.



QT-PL

Race, Hispanic or Latino, Age, and Housing Occupancy: 2010

2010 Census Redistricting Data (Public Law 94-171) Summary File

NOTE: For information on confidentiality protection, nonsampling error, and definitions, see <http://www.census.gov/prod/cen2010/pl94-171.pdf>

GEO: Penhook CDP, Virginia

Subject	Total		18 years and over	
	Number	Percent	Number	Percent
<b>POPULATION</b>				
Total population	801	100.0	681	100.0
<b>RACE</b>				
One race	795	99.3	681	100.0
White	685	85.5	592	86.9
Black or African American	99	12.4	81	11.9
American Indian and Alaska Native	0	0.0	0	0.0
Asian	5	0.6	5	0.7
Native Hawaiian and Other Pacific Islander	0	0.0	0	0.0
Some Other Race	6	0.7	3	0.4
Two or More Races	6	0.7	0	0.0
<b>HISPANIC OR LATINO AND RACE</b>				
Hispanic or Latino (of any race)	17	2.1	12	1.8
Not Hispanic or Latino	784	97.9	669	98.2
One race	778	97.1	669	98.2
White	671	83.8	583	85.6
Black or African American	99	12.4	81	11.9
American Indian and Alaska Native	0	0.0	0	0.0
Asian	5	0.6	5	0.7
Native Hawaiian and Other Pacific Islander	0	0.0	0	0.0
Some Other Race	3	0.4	0	0.0
Two or More Races	6	0.7	0	0.0
<b>HOUSING UNITS</b>				
Total housing units	961	100.0		
<b>OCCUPANCY STATUS</b>				
Occupied housing units	348	36.2		
Vacant housing units	613	63.8		

(X) Not applicable

Source: U.S. Census Bureau, 2010 Census.

2010 Census Redistricting Data (Public Law 94-171) Summary File, Tables P1, P2, P3, P4, H1.



QT-PL

Race, Hispanic or Latino, Age, and Housing Occupancy: 2010

2010 Census Redistricting Data (Public Law 94-171) Summary File

NOTE: For information on confidentiality protection, nonsampling error, and definitions, see <http://www.census.gov/prod/cen2010/pl94-171.pdf>

GEO: Rocky Mount town, Virginia

Subject	Total		18 years and over	
	Number	Percent	Number	Percent
<b>POPULATION</b>				
Total population	4,799	100.0	3,800	100.0
<b>RACE</b>				
One race	4,684	97.6	3,766	99.1
White	3,567	74.3	2,922	76.9
Black or African American	912	19.0	693	18.2
American Indian and Alaska Native	20	0.4	17	0.4
Asian	62	1.3	49	1.3
Native Hawaiian and Other Pacific Islander	1	0.0	1	0.0
Some Other Race	122	2.5	84	2.2
Two or More Races	115	2.4	34	0.9
<b>HISPANIC OR LATINO AND RACE</b>				
Hispanic or Latino (of any race)	231	4.8	155	4.1
Not Hispanic or Latino	4,568	95.2	3,645	95.9
One race	4,472	93.2	3,620	95.3
White	3,484	72.6	2,868	75.5
Black or African American	905	18.9	687	18.1
American Indian and Alaska Native	18	0.4	15	0.4
Asian	62	1.3	49	1.3
Native Hawaiian and Other Pacific Islander	1	0.0	1	0.0
Some Other Race	2	0.0	0	0.0
Two or More Races	96	2.0	25	0.7
<b>HOUSING UNITS</b>				
Total housing units	2,249	100.0		
<b>OCCUPANCY STATUS</b>				
Occupied housing units	2,046	91.0		
Vacant housing units	203	9.0		

(X) Not applicable

Source: U.S. Census Bureau, 2010 Census.

2010 Census Redistricting Data (Public Law 94-171) Summary File, Tables P1, P2, P3, P4, H1.



QT-PL

Race, Hispanic or Latino, Age, and Housing Occupancy: 2010

2010 Census Redistricting Data (Public Law 94-171) Summary File

NOTE: For information on confidentiality protection, nonsampling error, and definitions, see <http://www.census.gov/prod/cen2010/pl94-171.pdf>

GEO: Union Hall CDP, Virginia

Subject	Total		18 years and over	
	Number	Percent	Number	Percent
<b>POPULATION</b>				
Total population	1,138	100.0	992	100.0
<b>RACE</b>				
One race	1,124	98.8	984	99.2
White	1,073	94.3	940	94.8
Black or African American	36	3.2	32	3.2
American Indian and Alaska Native	2	0.2	2	0.2
Asian	8	0.7	6	0.6
Native Hawaiian and Other Pacific Islander	0	0.0	0	0.0
Some Other Race	5	0.4	4	0.4
Two or More Races	14	1.2	8	0.8
<b>HISPANIC OR LATINO AND RACE</b>				
Hispanic or Latino (of any race)	26	2.3	13	1.3
Not Hispanic or Latino	1,112	97.7	979	98.7
One race	1,103	96.9	972	98.0
White	1,057	92.9	932	94.0
Black or African American	36	3.2	32	3.2
American Indian and Alaska Native	2	0.2	2	0.2
Asian	8	0.7	6	0.6
Native Hawaiian and Other Pacific Islander	0	0.0	0	0.0
Some Other Race	0	0.0	0	0.0
Two or More Races	9	0.8	7	0.7
<b>HOUSING UNITS</b>				
Total housing units	1,215	100.0		
<b>OCCUPANCY STATUS</b>				
Occupied housing units	518	42.6		
Vacant housing units	697	57.4		

(X) Not applicable

Source: U.S. Census Bureau, 2010 Census.

2010 Census Redistricting Data (Public Law 94-171) Summary File, Tables P1, P2, P3, P4, H1.



QT-PL

Race, Hispanic or Latino, Age, and Housing Occupancy: 2010

2010 Census Redistricting Data (Public Law 94-171) Summary File

NOTE: For information on confidentiality protection, nonsampling error, and definitions, see <http://www.census.gov/prod/cen2010/pl94-171.pdf>

**GEO: Westlake Corner CDP, Virginia**

Subject	Total		18 years and over	
	Number	Percent	Number	Percent
<b>POPULATION</b>				
Total population	976	100.0	832	100.0
<b>RACE</b>				
One race	968	99.2	827	99.4
White	946	96.9	811	97.5
Black or African American	10	1.0	8	1.0
American Indian and Alaska Native	3	0.3	3	0.4
Asian	7	0.7	3	0.4
Native Hawaiian and Other Pacific Islander	0	0.0	0	0.0
Some Other Race	2	0.2	2	0.2
Two or More Races	8	0.8	5	0.6
<b>HISPANIC OR LATINO AND RACE</b>				
Hispanic or Latino (of any race)	10	1.0	9	1.1
Not Hispanic or Latino	966	99.0	823	98.9
One race	958	98.2	818	98.3
White	937	96.0	803	96.5
Black or African American	10	1.0	8	1.0
American Indian and Alaska Native	3	0.3	3	0.4
Asian	7	0.7	3	0.4
Native Hawaiian and Other Pacific Islander	0	0.0	0	0.0
Some Other Race	1	0.1	1	0.1
Two or More Races	8	0.8	5	0.6
<b>HOUSING UNITS</b>				
Total housing units	663	100.0		
<b>OCCUPANCY STATUS</b>				
Occupied housing units	439	66.2		
Vacant housing units	224	33.8		

(X) Not applicable

Source: U.S. Census Bureau, 2010 Census.

2010 Census Redistricting Data (Public Law 94-171) Summary File, Tables P1, P2, P3, P4, H1.

**Franklin County  
2010 Census Redistricting Data**

	Total	Population of one race	White alone	Black or African American alone	American Indian and Alaska Native alone	Asian alone	Native Hawaiian and Other Pacific Islander alone	Some Other Race alone	Two or More Races	Hispanic or Latino (of any race)	Housing Units		
											Total	Occupied	Vacant
<b>Census Tract 201.01</b>	<b>5,194</b>	<b>5,160</b>	<b>5,043</b>	<b>64</b>	<b>20</b>	<b>19</b>	<b>0</b>	<b>14</b>	<b>34</b>	<b>56</b>	<b>4,301</b>	<b>2,328</b>	<b>1,973</b>
Block Group 1	1,913	1,899	1,858	19	12	7	0	3	14	15	1,570	863	707
Block Group 2	1,508	1,493	1,458	20	2	6	0	7	15	19	980	637	343
Block Group 3	1,773	1,768	1,727	25	6	6	0	4	5	22	1,751	828	923
<b>Census Tract 201.02</b>	<b>2,508</b>	<b>2,488</b>	<b>2,311</b>	<b>139</b>	<b>3</b>	<b>25</b>	<b>0</b>	<b>10</b>	<b>20</b>	<b>44</b>	<b>2,556</b>	<b>1,102</b>	<b>1,454</b>
Block Group 1	1,210	1,200	1,108	67	3	18	0	4	10	27	819	504	315
Block Group 2	1,298	1,288	1,203	72	0	7	0	6	10	17	1,737	598	1,139
<b>Census Tract 202</b>	<b>5,529</b>	<b>5,438</b>	<b>4,896</b>	<b>407</b>	<b>19</b>	<b>17</b>	<b>0</b>	<b>99</b>	<b>91</b>	<b>176</b>	<b>2,467</b>	<b>2,224</b>	<b>243</b>
Block Group 1	1,889	1,878	1,760	101	8	6	0	3	11	12	852	764	88
Block Group 2	1,578	1,557	1,430	68	9	5	0	45	21	66	696	640	56
Block Group 3	2,062	2,003	1,706	238	2	6	0	51	59	98	919	820	99
<b>Census Tract 203</b>	<b>6,127</b>	<b>6,062</b>	<b>5,800</b>	<b>201</b>	<b>7</b>	<b>27</b>	<b>5</b>	<b>22</b>	<b>65</b>	<b>123</b>	<b>3,053</b>	<b>2,503</b>	<b>550</b>
Block Group 1	2,752	2,727	2,636	67	5	4	0	15	25	59	1,290	1,120	170
Block Group 2	3,375	3,335	3,164	134	2	23	5	7	40	64	1,763	1,383	380
<b>Census Tract 204</b>	<b>5,448</b>	<b>5,393</b>	<b>5,140</b>	<b>177</b>	<b>6</b>	<b>40</b>	<b>2</b>	<b>28</b>	<b>55</b>	<b>83</b>	<b>2,485</b>	<b>2,237</b>	<b>248</b>
Block Group 1	1,765	1,746	1,683	46	2	7	2	6	19	8	797	715	82
Block Group 2	2,436	2,422	2,332	57	2	15	0	16	14	39	1,086	1,004	82
Block Group 3	1,247	1,225	1,125	74	2	18	0	6	22	36	602	518	84
<b>Census Tract 205</b>	<b>8,135</b>	<b>8,030</b>	<b>7,619</b>	<b>273</b>	<b>21</b>	<b>23</b>	<b>0</b>	<b>94</b>	<b>105</b>	<b>176</b>	<b>3,669</b>	<b>3,292</b>	<b>377</b>
Block Group 1	2,031	2,015	1,934	56	11	6	0	8	16	25	976	863	113
Block Group 2	2,223	2,202	2,117	28	2	10	0	45	21	52	1,028	885	143
Block Group 3	1,916	1,884	1,711	128	7	4	0	34	32	62	818	747	71
Block Group 4	1,965	1,929	1,857	61	1	3	0	7	36	37	847	797	50
<b>Census Tract 206</b>	<b>3,774</b>	<b>3,745</b>	<b>3,216</b>	<b>386</b>	<b>5</b>	<b>6</b>	<b>3</b>	<b>129</b>	<b>29</b>	<b>61</b>	<b>1,725</b>	<b>1,166</b>	<b>559</b>
Block Group 1	2,239	2,229	1,721	368	5	6	1	128	10	57	694	512	182
Block Group 2	1,535	1,516	1,495	18	0	0	2	1	19	4	1,031	654	377

	Total	Population of one race	White alone	Black or African American alone	American Indian and Alaska Native alone	Asian alone	Native Hawaiian and Other Pacific Islander alone	Some Other Race alone	Two or More Races	Hispanic or Latino (of any race)	Housing Units		
											Total	Occupied	Vacant
<b>Census Tract 207</b>	<b>5,914</b>	<b>5,860</b>	<b>5,434</b>	<b>316</b>	<b>12</b>	<b>19</b>	<b>3</b>	<b>76</b>	<b>54</b>	<b>123</b>	<b>2,877</b>	<b>2,396</b>	<b>481</b>
Block Group 1	1,983	1,964	1,809	106	9	13	0	27	19	51	915	781	134
Block Group 2	1,249	1,244	1,167	44	1	3	0	29	5	34	655	520	135
Block Group 3	1,528	1,504	1,358	134	2	2	0	8	24	14	697	594	103
Block Group 4	1,154	1,148	1,100	32	0	1	3	12	6	24	610	501	109
<b>Census Tract 208</b>	<b>6,566</b>	<b>6,412</b>	<b>4,756</b>	<b>1,327</b>	<b>47</b>	<b>69</b>	<b>2</b>	<b>211</b>	<b>154</b>	<b>373</b>	<b>2,999</b>	<b>2,730</b>	<b>269</b>
Block Group 1	1,470	1,423	825	511	8	23	0	56	47	98	658	597	61
Block Group 2	758	747	529	175	4	8	1	30	11	41	448	406	42
Block Group 3	1,231	1,200	951	208	3	11	0	27	31	46	546	484	62
Block Group 4	1,192	1,152	869	232	8	6	0	37	40	78	508	465	43
Block Group 5	1,915	1,890	1,582	201	24	21	1	61	25	110	839	778	61
<b>Census Tract 209</b>	<b>6,964</b>	<b>6,884</b>	<b>5,484</b>	<b>1,285</b>	<b>10</b>	<b>7</b>	<b>0</b>	<b>98</b>	<b>80</b>	<b>209</b>	<b>3,183</b>	<b>2,802</b>	<b>381</b>
Block Group 1	1,370	1,351	1,108	227	0	2	0	14	19	51	638	545	93
Block Group 2	2,129	2,090	1,467	543	9	4	0	67	39	96	965	857	108
Block Group 3	2,184	2,167	1,884	270	0	0	0	13	17	44	996	887	109
Block Group 4	1,281	1,276	1,025	245	1	1	0	4	5	18	584	513	71
<b>County Totals</b>	<b>56,159</b>	<b>55,472</b>	<b>49,699</b>	<b>4,575</b>	<b>150</b>	<b>252</b>	<b>15</b>	<b>781</b>	<b>687</b>	<b>1,424</b>	<b>29,315</b>	<b>22,780</b>	<b>6,535</b>

NOTE: Change to the Virginia 2010 P.L. 94-171 Summary File data as delivered; for information on confidentiality protection, nonsampling error, and definitions, see <http://www.census.gov/prod/cen2010/pl94-171.pdf>.

Source: 2010 Census Redistricting Data (Public Law 94-171), U.S. Census Bureau.

Prepared by West Piedmont Planning District Commission, April, 2011.