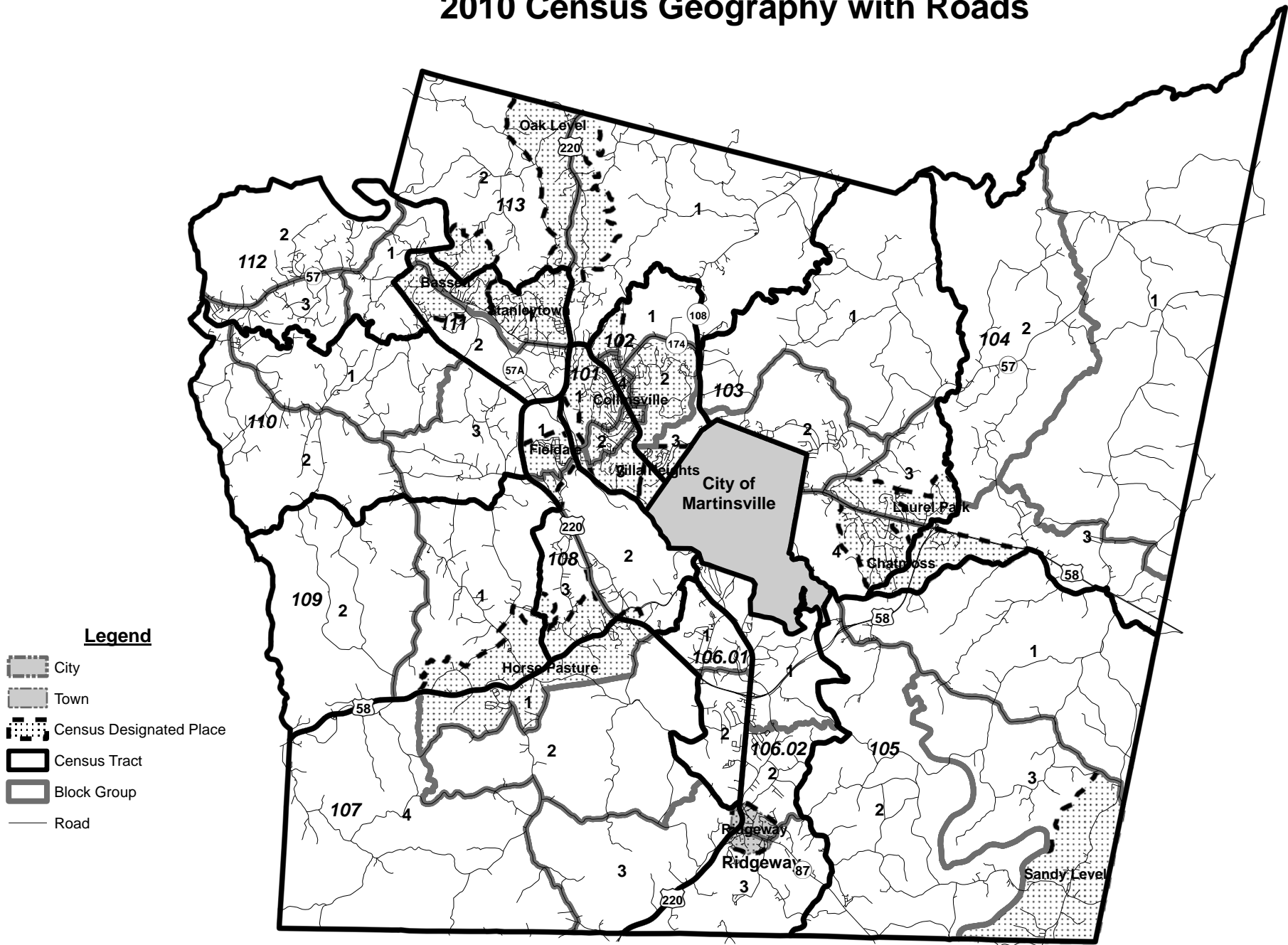
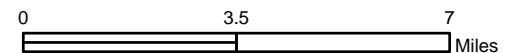


# Henry County 2010 Census Geography with Roads



Source: 2010 Census TIGER Files, U.S. Census Bureau.

Prepared by West Piedmont Planning District Commission, March 2011.



**QT-PL - Henry County, Virginia: Race, Hispanic or Latino, Age, and Housing Occupancy: 2010**

**2010 Census Redistricting Data (Public Law 94-171) Summary File**

NOTE: For information on confidentiality protection, nonsampling error, and definitions, see <http://www.census.gov/prod/cen2010/pl94-171.pdf>

Subject	Total		18 years and over	
	Number	Percent	Number	Percent
<b>POPULATION</b>				
Total population	54,151	100.0	43,043	100.0
<b>RACE</b>				
One race	53,309	98.4	42,686	99.2
White	39,487	72.9	32,122	74.6
Black or African American	11,841	21.9	9,352	21.7
American Indian and Alaska Native	97	0.2	74	0.2
Asian	237	0.4	171	0.4
Native Hawaiian and Other Pacific Islander	4	0.0	4	0.0
Some Other Race	1,643	3.0	963	2.2
Two or More Races	842	1.6	357	0.8
<b>HISPANIC OR LATINO AND RACE</b>				
Hispanic or Latino (of any race)	2,545	4.7	1,485	3.5
Not Hispanic or Latino	51,606	95.3	41,558	96.5
One race	50,882	94.0	41,254	95.8
White	38,737	71.5	31,690	73.6
Black or African American	11,786	21.8	9,320	21.7
American Indian and Alaska Native	78	0.1	59	0.1
Asian	236	0.4	170	0.4
Native Hawaiian and Other Pacific Islander	2	0.0	2	0.0
Some Other Race	43	0.1	13	0.0
Two or More Races	724	1.3	304	0.7
<b>HOUSING UNITS</b>				
Total housing units	26,268	100.0		
<b>OCCUPANCY STATUS</b>				
Occupied housing units	23,151	88.1		
Vacant housing units	3,117	11.9		

(X) Not applicable

Source: U.S. Census Bureau, 2010 Census.

2010 Census Redistricting Data (Public Law 94-171) Summary File, Tables P1, P2, P3, P4, H1.



QT-PL

Race, Hispanic or Latino, Age, and Housing Occupancy: 2010

2010 Census Redistricting Data (Public Law 94-171) Summary File

NOTE: For information on confidentiality protection, nonsampling error, and definitions, see <http://www.census.gov/prod/cen2010/pl94-171.pdf>

GEO: Bassett CDP, Virginia

Subject	Total		18 years and over	
	Number	Percent	Number	Percent
<b>POPULATION</b>				
Total population	1,100	100.0	864	100.0
<b>RACE</b>				
One race	1,076	97.8	856	99.1
White	762	69.3	609	70.5
Black or African American	230	20.9	202	23.4
American Indian and Alaska Native	0	0.0	0	0.0
Asian	3	0.3	3	0.3
Native Hawaiian and Other Pacific Islander	0	0.0	0	0.0
Some Other Race	81	7.4	42	4.9
Two or More Races	24	2.2	8	0.9
<b>HISPANIC OR LATINO AND RACE</b>				
Hispanic or Latino (of any race)	100	9.1	54	6.3
Not Hispanic or Latino	1,000	90.9	810	93.8
One race	978	88.9	803	92.9
White	746	67.8	599	69.3
Black or African American	229	20.8	201	23.3
American Indian and Alaska Native	0	0.0	0	0.0
Asian	3	0.3	3	0.3
Native Hawaiian and Other Pacific Islander	0	0.0	0	0.0
Some Other Race	0	0.0	0	0.0
Two or More Races	22	2.0	7	0.8
<b>HOUSING UNITS</b>				
Total housing units	607	100.0		
<b>OCCUPANCY STATUS</b>				
Occupied housing units	490	80.7		
Vacant housing units	117	19.3		

(X) Not applicable

Source: U.S. Census Bureau, 2010 Census.

2010 Census Redistricting Data (Public Law 94-171) Summary File, Tables P1, P2, P3, P4, H1.



QT-PL

Race, Hispanic or Latino, Age, and Housing Occupancy: 2010

2010 Census Redistricting Data (Public Law 94-171) Summary File

NOTE: For information on confidentiality protection, nonsampling error, and definitions, see <http://www.census.gov/prod/cen2010/pl94-171.pdf>

GEO: Chatmoss CDP, Virginia

Subject	Total		18 years and over	
	Number	Percent	Number	Percent
<b>POPULATION</b>				
Total population	1,698	100.0	1,381	100.0
<b>RACE</b>				
One race	1,683	99.1	1,375	99.6
White	1,264	74.4	1,053	76.2
Black or African American	360	21.2	285	20.6
American Indian and Alaska Native	1	0.1	1	0.1
Asian	21	1.2	12	0.9
Native Hawaiian and Other Pacific Islander	0	0.0	0	0.0
Some Other Race	37	2.2	24	1.7
Two or More Races	15	0.9	6	0.4
<b>HISPANIC OR LATINO AND RACE</b>				
Hispanic or Latino (of any race)	67	3.9	44	3.2
Not Hispanic or Latino	1,631	96.1	1,337	96.8
One race	1,620	95.4	1,333	96.5
White	1,237	72.9	1,035	74.9
Black or African American	358	21.1	283	20.5
American Indian and Alaska Native	1	0.1	1	0.1
Asian	21	1.2	12	0.9
Native Hawaiian and Other Pacific Islander	0	0.0	0	0.0
Some Other Race	3	0.2	2	0.1
Two or More Races	11	0.6	4	0.3
<b>HOUSING UNITS</b>				
Total housing units	784	100.0		
<b>OCCUPANCY STATUS</b>				
Occupied housing units	721	92.0		
Vacant housing units	63	8.0		

(X) Not applicable

Source: U.S. Census Bureau, 2010 Census.

2010 Census Redistricting Data (Public Law 94-171) Summary File, Tables P1, P2, P3, P4, H1.



QT-PL

Race, Hispanic or Latino, Age, and Housing Occupancy: 2010

2010 Census Redistricting Data (Public Law 94-171) Summary File

NOTE: For information on confidentiality protection, nonsampling error, and definitions, see <http://www.census.gov/prod/cen2010/pl94-171.pdf>

GEO: Collinsville CDP, Virginia

Subject	Total		18 years and over	
	Number	Percent	Number	Percent
<b>POPULATION</b>				
Total population	7,335	100.0	5,701	100.0
<b>RACE</b>				
One race	7,210	98.3	5,652	99.1
White	5,678	77.4	4,630	81.2
Black or African American	1,002	13.7	693	12.2
American Indian and Alaska Native	17	0.2	13	0.2
Asian	58	0.8	41	0.7
Native Hawaiian and Other Pacific Islander	0	0.0	0	0.0
Some Other Race	455	6.2	275	4.8
Two or More Races	125	1.7	49	0.9
<b>HISPANIC OR LATINO AND RACE</b>				
Hispanic or Latino (of any race)	653	8.9	397	7.0
Not Hispanic or Latino	6,682	91.1	5,304	93.0
One race	6,591	89.9	5,272	92.5
White	5,519	75.2	4,534	79.5
Black or African American	994	13.6	687	12.1
American Indian and Alaska Native	9	0.1	7	0.1
Asian	58	0.8	41	0.7
Native Hawaiian and Other Pacific Islander	0	0.0	0	0.0
Some Other Race	11	0.1	3	0.1
Two or More Races	91	1.2	32	0.6
<b>HOUSING UNITS</b>				
Total housing units	3,765	100.0		
<b>OCCUPANCY STATUS</b>				
Occupied housing units	3,321	88.2		
Vacant housing units	444	11.8		

(X) Not applicable

Source: U.S. Census Bureau, 2010 Census.

2010 Census Redistricting Data (Public Law 94-171) Summary File, Tables P1, P2, P3, P4, H1.



QT-PL

Race, Hispanic or Latino, Age, and Housing Occupancy: 2010

2010 Census Redistricting Data (Public Law 94-171) Summary File

NOTE: For information on confidentiality protection, nonsampling error, and definitions, see <http://www.census.gov/prod/cen2010/pl94-171.pdf>

GEO: Fieldale CDP, Virginia

Subject	Total		18 years and over	
	Number	Percent	Number	Percent
<b>POPULATION</b>				
Total population	879	100.0	712	100.0
<b>RACE</b>				
One race	868	98.7	708	99.4
White	811	92.3	666	93.5
Black or African American	48	5.5	36	5.1
American Indian and Alaska Native	0	0.0	0	0.0
Asian	1	0.1	1	0.1
Native Hawaiian and Other Pacific Islander	0	0.0	0	0.0
Some Other Race	8	0.9	5	0.7
Two or More Races	11	1.3	4	0.6
<b>HISPANIC OR LATINO AND RACE</b>				
Hispanic or Latino (of any race)	9	1.0	6	0.8
Not Hispanic or Latino	870	99.0	706	99.2
One race	859	97.7	702	98.6
White	810	92.2	665	93.4
Black or African American	48	5.5	36	5.1
American Indian and Alaska Native	0	0.0	0	0.0
Asian	1	0.1	1	0.1
Native Hawaiian and Other Pacific Islander	0	0.0	0	0.0
Some Other Race	0	0.0	0	0.0
Two or More Races	11	1.3	4	0.6
<b>HOUSING UNITS</b>				
Total housing units	455	100.0		
<b>OCCUPANCY STATUS</b>				
Occupied housing units	390	85.7		
Vacant housing units	65	14.3		

(X) Not applicable

Source: U.S. Census Bureau, 2010 Census.

2010 Census Redistricting Data (Public Law 94-171) Summary File, Tables P1, P2, P3, P4, H1.



QT-PL

Race, Hispanic or Latino, Age, and Housing Occupancy: 2010

2010 Census Redistricting Data (Public Law 94-171) Summary File

NOTE: For information on confidentiality protection, nonsampling error, and definitions, see <http://www.census.gov/prod/cen2010/pl94-171.pdf>

GEO: Horse Pasture CDP, Virginia

Subject	Total		18 years and over	
	Number	Percent	Number	Percent
<b>POPULATION</b>				
Total population	2,227	100.0	1,826	100.0
<b>RACE</b>				
One race	2,197	98.7	1,814	99.3
White	1,485	66.7	1,250	68.5
Black or African American	682	30.6	546	29.9
American Indian and Alaska Native	2	0.1	2	0.1
Asian	6	0.3	4	0.2
Native Hawaiian and Other Pacific Islander	0	0.0	0	0.0
Some Other Race	22	1.0	12	0.7
Two or More Races	30	1.3	12	0.7
<b>HISPANIC OR LATINO AND RACE</b>				
Hispanic or Latino (of any race)	24	1.1	16	0.9
Not Hispanic or Latino	2,203	98.9	1,810	99.1
One race	2,174	97.6	1,798	98.5
White	1,483	66.6	1,248	68.3
Black or African American	680	30.5	545	29.8
American Indian and Alaska Native	1	0.0	1	0.1
Asian	6	0.3	4	0.2
Native Hawaiian and Other Pacific Islander	0	0.0	0	0.0
Some Other Race	4	0.2	0	0.0
Two or More Races	29	1.3	12	0.7
<b>HOUSING UNITS</b>				
Total housing units	1,026	100.0		
<b>OCCUPANCY STATUS</b>				
Occupied housing units	931	90.7		
Vacant housing units	95	9.3		

(X) Not applicable

Source: U.S. Census Bureau, 2010 Census.

2010 Census Redistricting Data (Public Law 94-171) Summary File, Tables P1, P2, P3, P4, H1.



QT-PL

Race, Hispanic or Latino, Age, and Housing Occupancy: 2010

2010 Census Redistricting Data (Public Law 94-171) Summary File

NOTE: For information on confidentiality protection, nonsampling error, and definitions, see <http://www.census.gov/prod/cen2010/pl94-171.pdf>

GEO: Laurel Park CDP, Virginia

Subject	Total		18 years and over	
	Number	Percent	Number	Percent
<b>POPULATION</b>				
Total population	675	100.0	545	100.0
<b>RACE</b>				
One race	665	98.5	541	99.3
White	238	35.3	200	36.7
Black or African American	414	61.3	330	60.6
American Indian and Alaska Native	0	0.0	0	0.0
Asian	7	1.0	6	1.1
Native Hawaiian and Other Pacific Islander	0	0.0	0	0.0
Some Other Race	6	0.9	5	0.9
Two or More Races	10	1.5	4	0.7
<b>HISPANIC OR LATINO AND RACE</b>				
Hispanic or Latino (of any race)	23	3.4	11	2.0
Not Hispanic or Latino	652	96.6	534	98.0
One race	643	95.3	531	97.4
White	222	32.9	195	35.8
Black or African American	414	61.3	330	60.6
American Indian and Alaska Native	0	0.0	0	0.0
Asian	7	1.0	6	1.1
Native Hawaiian and Other Pacific Islander	0	0.0	0	0.0
Some Other Race	0	0.0	0	0.0
Two or More Races	9	1.3	3	0.6
<b>HOUSING UNITS</b>				
Total housing units	332	100.0		
<b>OCCUPANCY STATUS</b>				
Occupied housing units	310	93.4		
Vacant housing units	22	6.6		

(X) Not applicable

Source: U.S. Census Bureau, 2010 Census.

2010 Census Redistricting Data (Public Law 94-171) Summary File, Tables P1, P2, P3, P4, H1.



QT-PL

Race, Hispanic or Latino, Age, and Housing Occupancy: 2010

2010 Census Redistricting Data (Public Law 94-171) Summary File

NOTE: For information on confidentiality protection, nonsampling error, and definitions, see <http://www.census.gov/prod/cen2010/pl94-171.pdf>

GEO: Oak Level CDP, Virginia

Subject	Total		18 years and over	
	Number	Percent	Number	Percent
<b>POPULATION</b>				
Total population	857	100.0	701	100.0
<b>RACE</b>				
One race	853	99.5	700	99.9
White	791	92.3	653	93.2
Black or African American	58	6.8	44	6.3
American Indian and Alaska Native	3	0.4	2	0.3
Asian	1	0.1	1	0.1
Native Hawaiian and Other Pacific Islander	0	0.0	0	0.0
Some Other Race	0	0.0	0	0.0
Two or More Races	4	0.5	1	0.1
<b>HISPANIC OR LATINO AND RACE</b>				
Hispanic or Latino (of any race)	2	0.2	2	0.3
Not Hispanic or Latino	855	99.8	699	99.7
One race	851	99.3	698	99.6
White	790	92.2	652	93.0
Black or African American	57	6.7	43	6.1
American Indian and Alaska Native	3	0.4	2	0.3
Asian	1	0.1	1	0.1
Native Hawaiian and Other Pacific Islander	0	0.0	0	0.0
Some Other Race	0	0.0	0	0.0
Two or More Races	4	0.5	1	0.1
<b>HOUSING UNITS</b>				
Total housing units	439	100.0		
<b>OCCUPANCY STATUS</b>				
Occupied housing units	393	89.5		
Vacant housing units	46	10.5		

(X) Not applicable

Source: U.S. Census Bureau, 2010 Census.

2010 Census Redistricting Data (Public Law 94-171) Summary File, Tables P1, P2, P3, P4, H1.



QT-PL

Race, Hispanic or Latino, Age, and Housing Occupancy: 2010

2010 Census Redistricting Data (Public Law 94-171) Summary File

NOTE: For information on confidentiality protection, nonsampling error, and definitions, see <http://www.census.gov/prod/cen2010/pl94-171.pdf>

GEO: Ridgeway town, Virginia

Subject	Total		18 years and over	
	Number	Percent	Number	Percent
<b>POPULATION</b>				
Total population	742	100.0	568	100.0
<b>RACE</b>				
One race	732	98.7	561	98.8
White	577	77.8	442	77.8
Black or African American	113	15.2	94	16.5
American Indian and Alaska Native	8	1.1	4	0.7
Asian	14	1.9	9	1.6
Native Hawaiian and Other Pacific Islander	0	0.0	0	0.0
Some Other Race	20	2.7	12	2.1
Two or More Races	10	1.3	7	1.2
<b>HISPANIC OR LATINO AND RACE</b>				
Hispanic or Latino (of any race)	40	5.4	22	3.9
Not Hispanic or Latino	702	94.6	546	96.1
One race	694	93.5	541	95.2
White	559	75.3	434	76.4
Black or African American	113	15.2	94	16.5
American Indian and Alaska Native	8	1.1	4	0.7
Asian	14	1.9	9	1.6
Native Hawaiian and Other Pacific Islander	0	0.0	0	0.0
Some Other Race	0	0.0	0	0.0
Two or More Races	8	1.1	5	0.9
<b>HOUSING UNITS</b>				
Total housing units	361	100.0		
<b>OCCUPANCY STATUS</b>				
Occupied housing units	316	87.5		
Vacant housing units	45	12.5		

(X) Not applicable

Source: U.S. Census Bureau, 2010 Census.

2010 Census Redistricting Data (Public Law 94-171) Summary File, Tables P1, P2, P3, P4, H1.



QT-PL

Race, Hispanic or Latino, Age, and Housing Occupancy: 2010

2010 Census Redistricting Data (Public Law 94-171) Summary File

NOTE: For information on confidentiality protection, nonsampling error, and definitions, see <http://www.census.gov/prod/cen2010/pl94-171.pdf>

GEO: Sandy Level CDP, Virginia

Subject	Total		18 years and over	
	Number	Percent	Number	Percent
<b>POPULATION</b>				
Total population	484	100.0	397	100.0
<b>RACE</b>				
One race	476	98.3	390	98.2
White	171	35.3	146	36.8
Black or African American	302	62.4	242	61.0
American Indian and Alaska Native	0	0.0	0	0.0
Asian	0	0.0	0	0.0
Native Hawaiian and Other Pacific Islander	0	0.0	0	0.0
Some Other Race	3	0.6	2	0.5
Two or More Races	8	1.7	7	1.8
<b>HISPANIC OR LATINO AND RACE</b>				
Hispanic or Latino (of any race)	4	0.8	3	0.8
Not Hispanic or Latino	480	99.2	394	99.2
One race	472	97.5	387	97.5
White	171	35.3	146	36.8
Black or African American	301	62.2	241	60.7
American Indian and Alaska Native	0	0.0	0	0.0
Asian	0	0.0	0	0.0
Native Hawaiian and Other Pacific Islander	0	0.0	0	0.0
Some Other Race	0	0.0	0	0.0
Two or More Races	8	1.7	7	1.8
<b>HOUSING UNITS</b>				
Total housing units	280	100.0		
<b>OCCUPANCY STATUS</b>				
Occupied housing units	221	78.9		
Vacant housing units	59	21.1		

(X) Not applicable

Source: U.S. Census Bureau, 2010 Census.

2010 Census Redistricting Data (Public Law 94-171) Summary File, Tables P1, P2, P3, P4, H1.



QT-PL

Race, Hispanic or Latino, Age, and Housing Occupancy: 2010

2010 Census Redistricting Data (Public Law 94-171) Summary File

NOTE: For information on confidentiality protection, nonsampling error, and definitions, see <http://www.census.gov/prod/cen2010/pl94-171.pdf>

GEO: Stanleytown CDP, Virginia

Subject	Total		18 years and over	
	Number	Percent	Number	Percent
<b>POPULATION</b>				
Total population	1,422	100.0	1,136	100.0
<b>RACE</b>				
One race	1,411	99.2	1,132	99.6
White	1,255	88.3	1,028	90.5
Black or African American	56	3.9	41	3.6
American Indian and Alaska Native	3	0.2	3	0.3
Asian	12	0.8	9	0.8
Native Hawaiian and Other Pacific Islander	0	0.0	0	0.0
Some Other Race	85	6.0	51	4.5
Two or More Races	11	0.8	4	0.4
<b>HISPANIC OR LATINO AND RACE</b>				
Hispanic or Latino (of any race)	98	6.9	60	5.3
Not Hispanic or Latino	1,324	93.1	1,076	94.7
One race	1,314	92.4	1,072	94.4
White	1,240	87.2	1,017	89.5
Black or African American	56	3.9	41	3.6
American Indian and Alaska Native	3	0.2	3	0.3
Asian	12	0.8	9	0.8
Native Hawaiian and Other Pacific Islander	0	0.0	0	0.0
Some Other Race	3	0.2	2	0.2
Two or More Races	10	0.7	4	0.4
<b>HOUSING UNITS</b>				
Total housing units	745	100.0		
<b>OCCUPANCY STATUS</b>				
Occupied housing units	614	82.4		
Vacant housing units	131	17.6		

(X) Not applicable

Source: U.S. Census Bureau, 2010 Census.

2010 Census Redistricting Data (Public Law 94-171) Summary File, Tables P1, P2, P3, P4, H1.



ARIZON NEW MEXICO

OKLAHOMA

ARKANSAS

TENNESSEE

NORTH CAROLINA

SOUTH CAROLINA

QT-PL

Race, Hispanic or Latino, Age, and Housing Occupancy: 2010

2010 Census Redistricting Data (Public Law 94-171) Summary File

NOTE: For information on confidentiality protection, nonsampling error, and definitions, see <http://www.census.gov/prod/cen2010/pl94-171.pdf>

GEO: Villa Heights CDP, Virginia

Subject	Total		18 years and over	
	Number	Percent	Number	Percent
<b>POPULATION</b>				
Total population	717	100.0	546	100.0
<b>RACE</b>				
One race	710	99.0	544	99.6
White	486	67.8	406	74.4
Black or African American	216	30.1	130	23.8
American Indian and Alaska Native	0	0.0	0	0.0
Asian	1	0.1	1	0.2
Native Hawaiian and Other Pacific Islander	0	0.0	0	0.0
Some Other Race	7	1.0	7	1.3
Two or More Races	7	1.0	2	0.4
<b>HISPANIC OR LATINO AND RACE</b>				
Hispanic or Latino (of any race)	31	4.3	22	4.0
Not Hispanic or Latino	686	95.7	524	96.0
One race	679	94.7	522	95.6
White	463	64.6	391	71.6
Black or African American	215	30.0	130	23.8
American Indian and Alaska Native	0	0.0	0	0.0
Asian	1	0.1	1	0.2
Native Hawaiian and Other Pacific Islander	0	0.0	0	0.0
Some Other Race	0	0.0	0	0.0
Two or More Races	7	1.0	2	0.4
<b>HOUSING UNITS</b>				
Total housing units	350	100.0		
<b>OCCUPANCY STATUS</b>				
Occupied housing units	292	83.4		
Vacant housing units	58	16.6		

(X) Not applicable

Source: U.S. Census Bureau, 2010 Census.

2010 Census Redistricting Data (Public Law 94-171) Summary File, Tables P1, P2, P3, P4, H1.

**Henry County  
2010 Census Redistricting Data**

	Total	Population of one race	White alone	Black or African American alone	American Indian and Alaska Native alone	Asian alone	Hawaiian and Other Pacific Islander alone	Some Other Race alone	Two or More Races	Hispanic or Latino (of any race)	Housing Units		
											Total	Occupied	Vacant
<b>Census Tract 101</b>	<b>3,965</b>	<b>3,878</b>	<b>2,946</b>	<b>542</b>	<b>14</b>	<b>30</b>	<b>0</b>	<b>346</b>	<b>87</b>	<b>469</b>	<b>2,006</b>	<b>1,768</b>	<b>238</b>
Block Group 1	2,121	2,076	1,694	196	2	16	0	168	45	214	1,069	955	114
Block Group 2	1,187	1,167	788	195	9	6	0	169	20	245	590	517	73
Block Group 3	657	635	464	151	3	8	0	9	22	10	347	296	51
<b>Census Tract 102</b>	<b>5,112</b>	<b>5,047</b>	<b>3,801</b>	<b>1,054</b>	<b>8</b>	<b>46</b>	<b>0</b>	<b>138</b>	<b>65</b>	<b>250</b>	<b>2,494</b>	<b>2,202</b>	<b>292</b>
Block Group 1	923	913	635	220	5	20	0	33	10	45	352	317	35
Block Group 2	2,149	2,126	1,766	297	1	19	0	43	23	88	1,085	976	109
Block Group 3	916	904	509	387	0	1	0	7	12	33	443	383	60
Block Group 4	1,124	1,104	891	150	2	6	0	55	20	84	614	526	88
<b>Census Tract 103</b>	<b>5,643</b>	<b>5,561</b>	<b>3,526</b>	<b>1,924</b>	<b>5</b>	<b>33</b>	<b>0</b>	<b>73</b>	<b>82</b>	<b>146</b>	<b>2,642</b>	<b>2,406</b>	<b>236</b>
Block Group 1	987	976	782	181	1	4	0	8	11	16	492	430	62
Block Group 2	1,775	1,744	1,164	550	3	12	0	15	31	39	879	790	89
Block Group 3	1,594	1,576	615	920	1	10	0	30	18	56	740	687	53
Block Group 4	1,287	1,265	965	273	0	7	0	20	22	35	531	499	32
<b>Census Tract 104</b>	<b>3,875</b>	<b>3,818</b>	<b>2,207</b>	<b>1,375</b>	<b>5</b>	<b>20</b>	<b>0</b>	<b>211</b>	<b>57</b>	<b>349</b>	<b>1,766</b>	<b>1,559</b>	<b>207</b>
Block Group 1	1,335	1,316	998	232	3	6	0	77	19	124	590	523	67
Block Group 2	958	954	459	471	1	1	0	22	4	35	464	407	57
Block Group 3	1,582	1,548	750	672	1	13	0	112	34	190	712	629	83
<b>Census Tract 105</b>	<b>4,114</b>	<b>4,055</b>	<b>2,940</b>	<b>990</b>	<b>6</b>	<b>9</b>	<b>1</b>	<b>109</b>	<b>59</b>	<b>183</b>	<b>2,012</b>	<b>1,732</b>	<b>280</b>
Block Group 1	1,515	1,486	1,060	350	3	4	0	69	29	95	698	611	87
Block Group 2	1,635	1,621	1,467	111	3	3	1	36	14	79	801	705	96
Block Group 3	964	948	413	529	0	2	0	4	16	9	513	416	97
<b>Census Tract 106.01</b>	<b>2,799</b>	<b>2,755</b>	<b>2,045</b>	<b>550</b>	<b>6</b>	<b>34</b>	<b>0</b>	<b>120</b>	<b>44</b>	<b>185</b>	<b>1,331</b>	<b>1,220</b>	<b>111</b>
Block Group 1	1,512	1,479	936	423	4	7	0	109	33	173	727	656	71
Block Group 2	1,287	1,276	1,109	127	2	27	0	11	11	12	604	564	40

	Total	Population of one race	White alone	Black or African American alone	American Indian and Alaska Native alone	Asian alone	Hawaiian and Other Pacific Islander alone	Some Other Race alone	Two or More Races	Hispanic or Latino (of any race)	Housing Units		
											Total	Occupied	Vacant
<b>Census Tract 106.02</b>	<b>4,025</b>	<b>3,976</b>	<b>3,234</b>	<b>642</b>	<b>15</b>	<b>26</b>	<b>0</b>	<b>59</b>	<b>49</b>	<b>126</b>	<b>1,976</b>	<b>1,716</b>	<b>260</b>
Block Group 1	1,030	1,021	796	193	1	8	0	23	9	29	585	487	98
Block Group 2	1,592	1,570	1,281	250	1	15	0	23	22	61	729	642	87
Block Group 3	1,403	1,385	1,157	199	13	3	0	13	18	36	662	587	75
<b>Census Tract 107</b>	<b>3,519</b>	<b>3,474</b>	<b>2,479</b>	<b>954</b>	<b>7</b>	<b>4</b>	<b>0</b>	<b>30</b>	<b>45</b>	<b>60</b>	<b>1,665</b>	<b>1,483</b>	<b>182</b>
Block Group 1	1,282	1,265	886	371	1	3	0	4	17	4	546	493	53
Block Group 2	612	607	346	256	3	1	0	1	5	9	315	277	38
Block Group 3	550	532	433	91	2	0	0	6	18	22	282	250	32
Block Group 4	1,075	1,070	814	236	1	0	0	19	5	25	522	463	59
<b>Census Tract 108</b>	<b>2,564</b>	<b>2,522</b>	<b>1,328</b>	<b>1,168</b>	<b>2</b>	<b>4</b>	<b>0</b>	<b>20</b>	<b>42</b>	<b>33</b>	<b>1,327</b>	<b>1,148</b>	<b>179</b>
Block Group 1	708	699	647	43	0	1	0	8	9	8	381	326	55
Block Group 2	921	910	434	468	2	0	0	6	11	15	455	391	64
Block Group 3	935	913	247	657	0	3	0	6	22	10	491	431	60
<b>Census Tract 109</b>	<b>2,755</b>	<b>2,724</b>	<b>2,133</b>	<b>570</b>	<b>2</b>	<b>4</b>	<b>0</b>	<b>15</b>	<b>31</b>	<b>45</b>	<b>1,343</b>	<b>1,205</b>	<b>138</b>
Block Group 1	1,868	1,848	1,372	457	2	2	0	15	20	35	937	834	103
Block Group 2	887	876	761	113	0	2	0	0	11	10	406	371	35
<b>Census Tract 110</b>	<b>5,147</b>	<b>5,036</b>	<b>3,996</b>	<b>921</b>	<b>8</b>	<b>1</b>	<b>3</b>	<b>107</b>	<b>111</b>	<b>155</b>	<b>2,491</b>	<b>2,170</b>	<b>321</b>
Block Group 1	1,693	1,654	1,159	432	0	0	1	62	39	82	781	676	105
Block Group 2	2,089	2,054	1,960	63	5	1	2	23	35	29	1,008	886	122
Block Group 3	1,365	1,328	877	426	3	0	0	22	37	44	702	608	94
<b>Census Tract 111</b>	<b>2,696</b>	<b>2,660</b>	<b>2,268</b>	<b>201</b>	<b>3</b>	<b>17</b>	<b>0</b>	<b>171</b>	<b>36</b>	<b>202</b>	<b>1,398</b>	<b>1,146</b>	<b>252</b>
Block Group 1	1,933	1,915	1,688	91	3	12	0	121	18	141	1,011	819	192
Block Group 2	763	745	580	110	0	5	0	50	18	61	387	327	60
<b>Census Tract 112</b>	<b>3,768</b>	<b>3,675</b>	<b>3,214</b>	<b>252</b>	<b>3</b>	<b>7</b>	<b>0</b>	<b>199</b>	<b>93</b>	<b>268</b>	<b>1,787</b>	<b>1,575</b>	<b>212</b>
Block Group 1	822	803	596	118	0	1	0	88	19	108	396	339	57
Block Group 2	1,282	1,237	1,139	57	1	4	0	36	45	49	619	543	76
Block Group 3	1,664	1,635	1,479	77	2	2	0	75	29	111	772	693	79

	Total	Population of one race	White alone	Black or African American alone	American Indian and Alaska Native alone	Asian alone	Hawaiian and Other Pacific Islander alone	Some Other Race alone	Two or More Races	Hispanic or Latino (of any race)	Housing Units		
											Total	Occupied	Vacant
<b>Census Tract 113</b>	<b>4,169</b>	<b>4,128</b>	<b>3,370</b>	<b>698</b>	<b>13</b>	<b>2</b>	<b>0</b>	<b>45</b>	<b>41</b>	<b>74</b>	<b>2,030</b>	<b>1,821</b>	<b>209</b>
Block Group 1	2,434	2,415	2,223	152	7	1	0	32	19	48	1,153	1,049	104
Block Group 2	1,735	1,713	1,147	546	6	1	0	13	22	26	877	772	105
<b>County Totals</b>	<b>54,151</b>	<b>53,309</b>	<b>39,487</b>	<b>11,841</b>	<b>97</b>	<b>237</b>	<b>4</b>	<b>1,643</b>	<b>842</b>	<b>2,545</b>	<b>26,268</b>	<b>23,151</b>	<b>3,117</b>

NOTE: Change to the Virginia 2010 P.L. 94-171 Summary File data as delivered; for information on confidentiality protection, nonsampling error, and definitions, see <http://www.census.gov/prod/cen2010/pl94-171.pdf>.

Source: 2010 Census Redistricting Data (Public Law 94-171), U.S. Census Bureau.

Prepared by West Piedmont Planning District Commission, April, 2011.