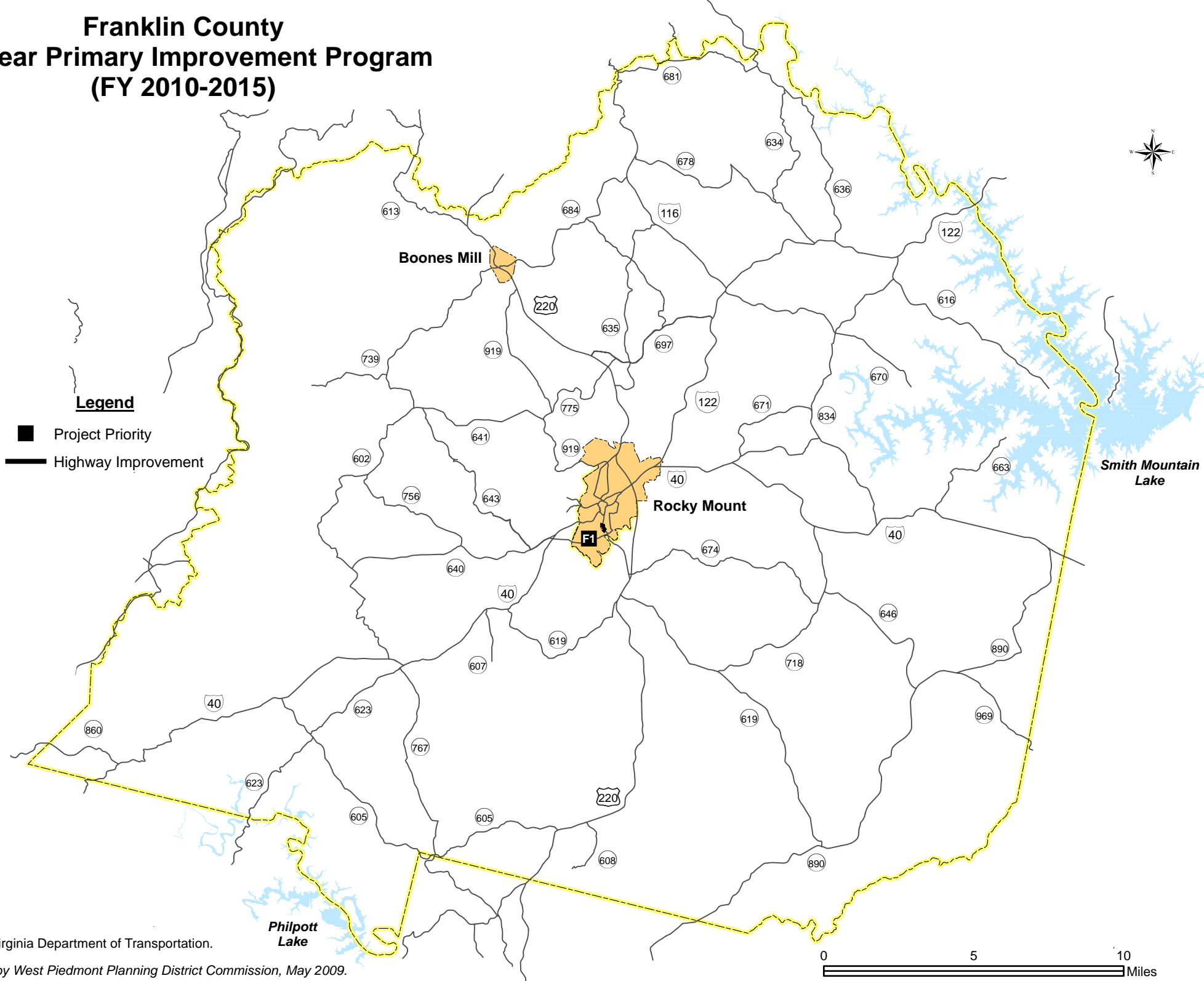


Six-Year Primary Highway Improvement Plan

Franklin County Six-Year Primary Improvement Program (FY 2010-2015)



Source: Virginia Department of Transportation.

Prepared by West Piedmont Planning District Commission, May 2009.

0 5 10 Miles



All Projects

Program:
District:
 Jurisdictions **Residencies**
Road System:

Route Zip UPC Keyword

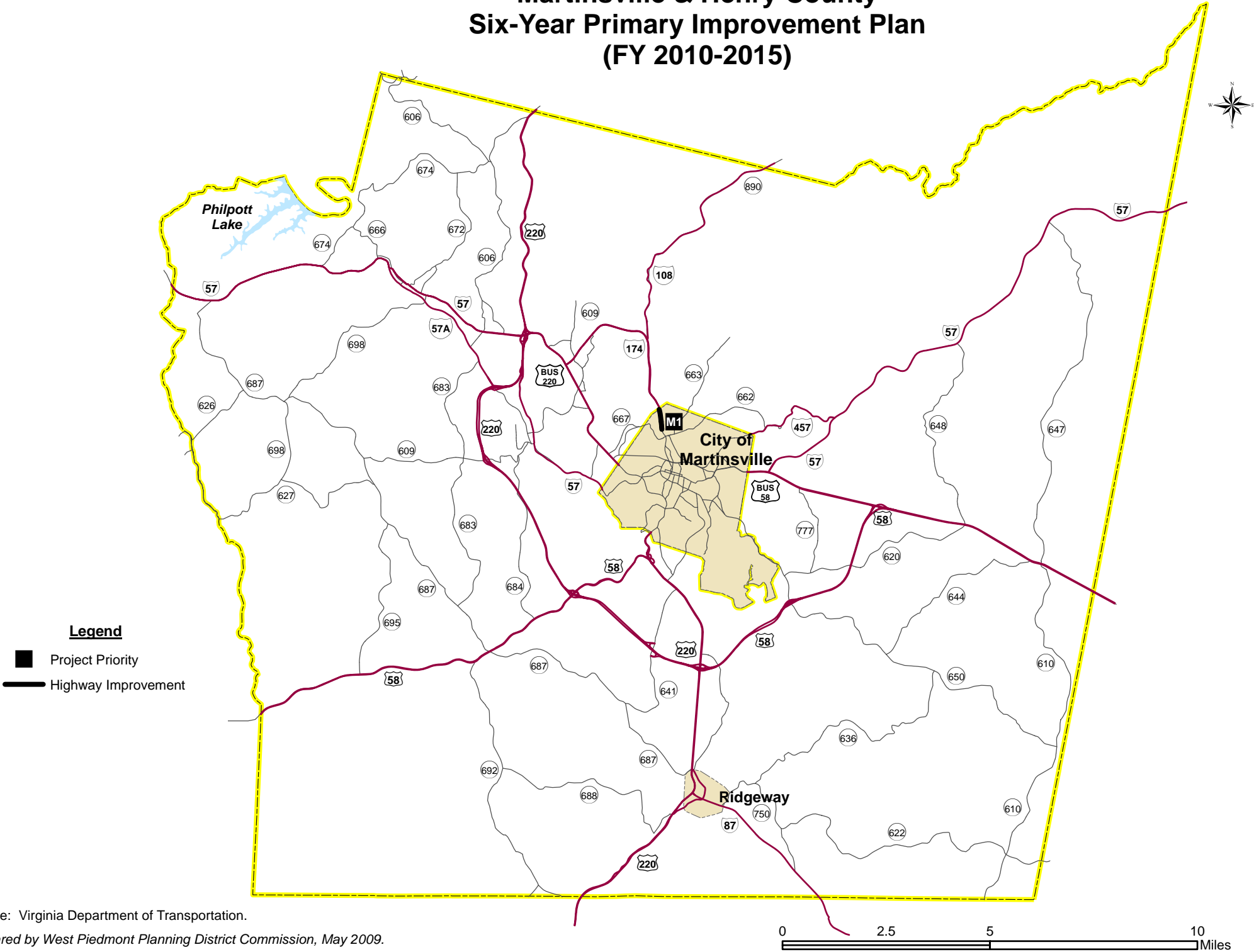
Project Search Results (1 projects found)

Export Report

UPC	Description	Route	District	Road System	Estimate	Previous	FY09	FY10-FY14	Balance	Map It
17692	RTE 220 - SOUTH MAIN STREET - VARIES FROM 2 TO 4 LANES	0220	Salem	Urban	\$8,084	\$2,626	\$192	\$352	\$4,912	

F1 -

Martinsville & Henry County Six-Year Primary Improvement Plan (FY 2010-2015)



Source: Virginia Department of Transportation.

Prepared by West Piedmont Planning District Commission, May 2009.

All Projects

Program:
District:
Jurisdictions:
Residencies:
Road System:

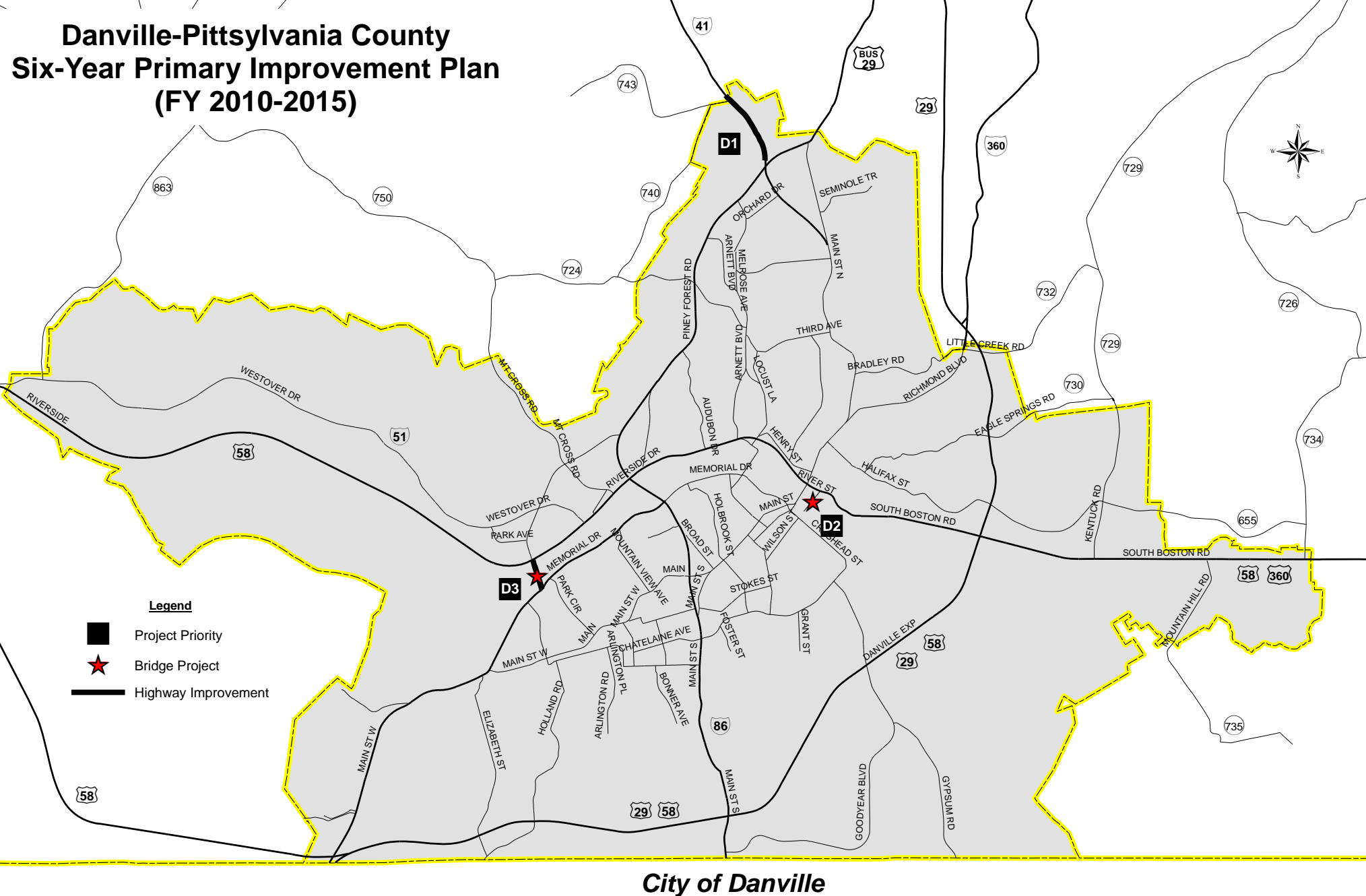
Route Zip UPC Keyword

Project Search Results (1 projects found)

Export Report

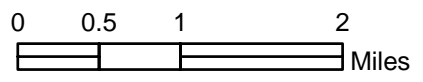
UPC	Description	Route	District	Road System	Estimate	Previous	FY09	FY10-FY14	Balance	Map It
M1-52077	RTE 174 - WIDENING TO 5 LANES	0174	Salem	Urban	\$7,494	\$4,135	\$718	\$1,347	\$1,295	

Danville-Pittsylvania County Six-Year Primary Improvement Plan (FY 2010-2015)



Source: Virginia Department of Transportation.

Prepared by West Piedmont Planning District Commission, May 2009.



All Projects

Program :
District:
 Jurisdiction **Residencies**
Road System:

Route Zip UPC Keyword

Project Search Results (3 projects found)

[Export Report](#)

UPC	Description	Route	District	Road System	Estimate	Previous	FY09	FY10-14	Balance	Map It
14614	RTE 41 - WIDEN TO 4 LANES UNDIVIDED, CURB, GUTTER & SIDEWALK	0041	Lynchburg	Urban	\$16,057	\$14,874	\$1,183	\$0	\$0	
12521	WORSHAM STREET - BRIDGE DEMOLITION	U000	Lynchburg	Urban	\$7,142	\$6,561	\$581	\$0	\$0	
17740	PIEDMONT DRIVE - INCLUDING PARALLEL ROBERTSON BRIDGE	U000	Lynchburg	Urban	\$39,655	\$10,465	\$1,753	\$13,542	\$13,894	

D1
D2
D3