

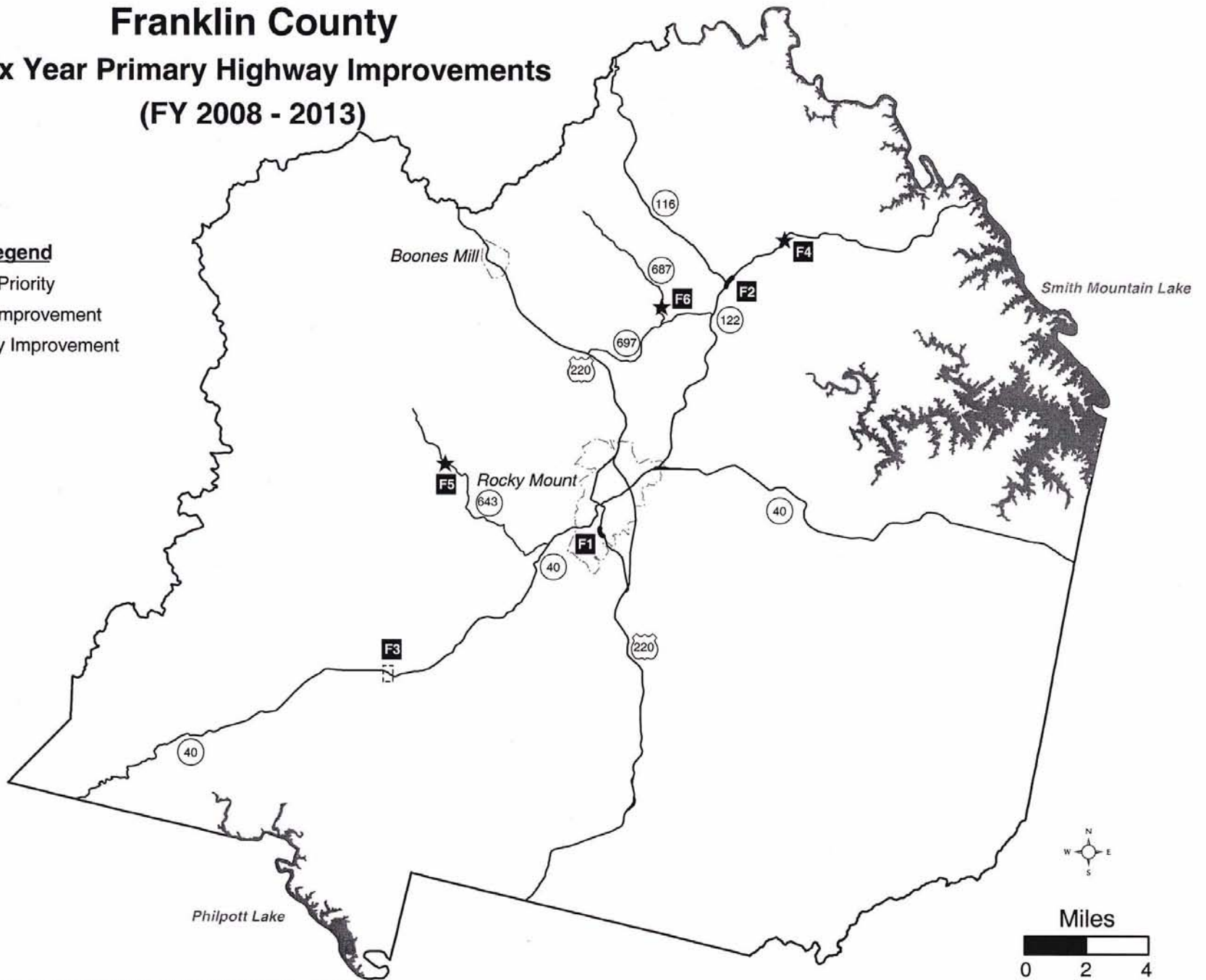
Six-Year Primary Highway Improvement Plan

Franklin County

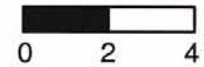
Six Year Primary Highway Improvements (FY 2008 - 2013)

Legend

- 1** Project Priority
- ★ Bridge Improvement
- Highway Improvement



Miles



Program:
District:
Jurisdictions:
Residencies:
Road System:

Route Zip UPC Keyword

Project Search Results (1 projects found)

Export Report

F1

UPC	Description	Route	District	Road System	Estimate	Previous	FY08	FY09 FY13	Balance	Map It
17692	RTE 120 - SOUTH MAIN STREET VARIES FROM 2 TO 4 LANES	0220	Salem	Urban	\$7,802	\$2,285	\$265	\$1,448	\$3,804	
					(Values in Thousands of Dollars)					
					Six-Year Improvement					

light 20

artmen

Transportation. All rights reserved

Six-Year Improvement

gram

Program: FY08 FINAL (APPROVED BY CTB 06-21-07) District: All Districts
 Jurisdictions Residencies Road System: All
Franklin County
 Route Zip UPC Keyword Search Reset

Project Search Results (5 projects found)

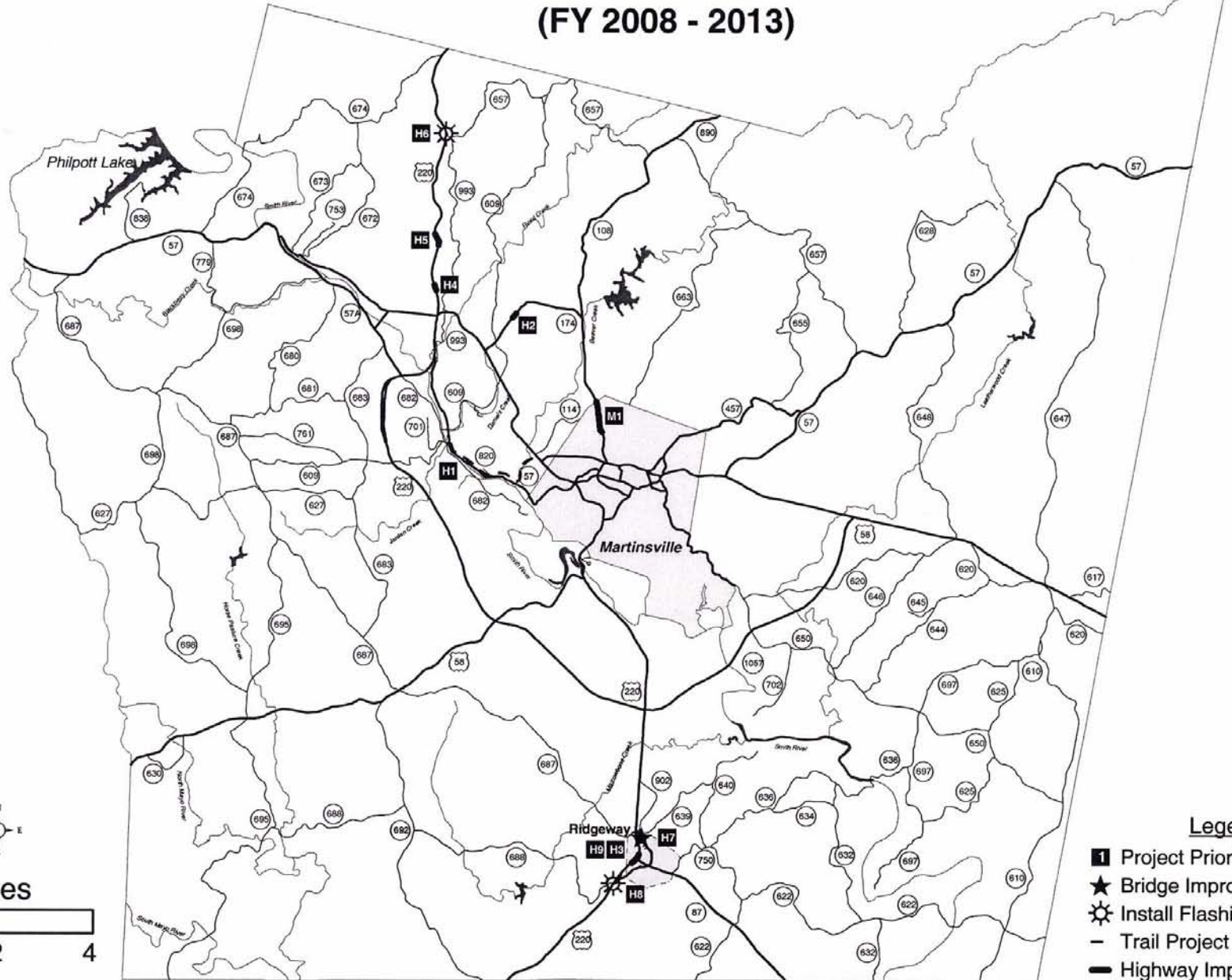
Export Report

UPC	Description	Route	District	Road System	Estimate	Previous	FY08	FY09-FY10	Balance	Map It
	(Values in Thousands of Dollars)									
<i>F3</i> 56412	FRAKLIN COUNTY BOARD OF SUPERVISORS		Salem	Enhancement	\$407	\$463	\$0	\$0		
<i>F2</i> 52515	RTE 122 - ADD LTL & RTL @ RTE 122 & RTL @ RTE 116-PE&RW ONLY	0122	Salem	Primary	\$2,757	\$1,216	\$350	\$1,192	\$0	
<i>F4</i> 82189	ROUTE 122 - BRIDGE OVER GILLS CREEK - STRUCTURE #1034	0122	Salem	Primary	\$2,929	\$45	\$0	\$2,884	\$0	
<i>F5</i> T4924	Coles Creek Rd over Blackwater River Va struc 3057	0643	Salem	Secondary	\$761	\$0	\$0	\$761		
<i>F6</i> 84934	Replace existing one-lane bridge with a new structure. <i>(Maggodee Branch)</i>	0687	Salem	Secondary	\$787	\$97	\$0	\$2,194		

*→ Maggodee Crk
Structure #6089*

Martinsville-Henry County

Six Year Primary Highway Improvements (FY 2008 - 2013)

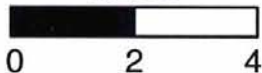


Legend

- Project Priority
- Bridge Improvement
- Install Flashing Lights
- Trail Project
- Highway Improvement



Miles



Program:
District:
Jurisdictions: Jurisdictions Residencies **Road System:**

Route Zip UPC Keyword

Project Search Results: 8 projects found

Export Report

UPC	Description	Route	District	Road System	Estimate	Previous	FY08	FY09- FY10	Bal	Map It
H1 80433	SMITH RIVER TRAIL - FY07 SAFETEA-LU EARTHMARK PROJECT		Salem	Miscellaneous	\$500	\$226	\$95	\$112	\$67	
H2 86520	Insta Left Turn Lane (<i>Plantation Rd</i>)	0174	Salem	Miscellaneous	\$400	\$0	\$400	\$0	\$0	
H3 86538	Insta Right In and Right Out Entrance	0220	Salem	Miscellaneous	\$26	\$0	\$26	\$0	\$0	
H4 86545	Insta Concrete Median	0220	Salem	Miscellaneous	\$102	\$0	\$102	\$0	\$0	
H5 52516	RTE 220 - ADJUST GRADE & SUPERELEVATION ON NBL	0220	Salem	Primary	\$1,545	\$1,554	\$0	\$0		
H6 71294	RTE 220 - INSTALL SIGNS W/FLASHING LIGHTS SBL	0220	Salem	Primary	\$21	\$21	\$0	\$0	\$0	
H7 71857	RTE 220 BUS - REPLACE BRIDGE OVER NS RAILROAD & ROUTE 639	0220	Salem	Primary	\$3,195	\$4,012	\$0	\$0		
H8 86312	Insta Flashing Lights	0220	Salem	Primary	\$21	\$0	\$21	\$0	\$0	



All Projects

Major Projects

MPO

Reports

Home

Help

About

Feedback

Program: FY08 FIN L (APPROVED BY CTB 06-21-07) **District:** All Districts **Jurisdictions:** Jurisdictions Residencies **Road System:** All
 Route: _____ Zip: _____ UPC: _____ Keyword: _____

Project Search Results

Export Report

49

Project ID	Project Name	UPC	Location	Road System	Estimate	Actual	of District	of State
80573	RTE 120 - TOWN OF RIDGEWAY CONSTRUCT LTL ON SBL	0220	Salem	Primary	\$1,493	\$1,580	\$0	\$0

Program: FY08 FINAL (APPROVED BY CTB 06-21-07) |
 District: All Districts |
 Jurisdictions: Martinsville |
 Residencies: |
 Road System: All

Route _____ Zip _____ UPC _____ Keyword _____ Search

Project Search Results (2 projects found)

Export Report

UPC	Description	Route	District	Road System	Estimate	Previous	FY09-FY13		Map It
							Values in Thousands of Dollars		
15836	RTE 74 - WIDENING & INTERSECTION IMPROVEMENTS (Complete)	0174	Salem	Urban	\$12,594	\$12,642	\$0	\$0	
52077	RTE 74 - WIDENING TO 5 LANES	0174	Salem	Urban	\$7,482	\$1,422	\$939	\$4,871	\$251
							Six-Year Improvement		

X
MI

Program:
District:
Jurisdictions:
Residencies:
Road System:

Route Zip UPC Keyword

Project Search Results (6 projects found)

Export Report

UPC	Description	Route	District	Road System	Estimate	Previous	FY08	FY09 FY13	Balance	Map
K1 80431	ROCKY KNOB HERITAGE CENTER - FY07 SAFETEAU EARMARK PROJECT		Salem	Miscellaneous	\$1,500	\$679	\$286	\$335	\$200	
K2 56812	CONNECT CONNECTOR ROUTE (Rt. 8)		Salem	Primary	\$7,094	\$6,100	\$0	\$994	\$0	
K3 17536	RTE 8 - CORRDR DEVLPMNT PRGRM- 4 LANES-PE & RW ONLY	0058	Salem	Primary	\$11,208	\$11,208	\$0	\$0	\$0	
K4 17537	RTE 8 - CORRIDOR DEVELOPMENT PROJ - 4 LANES - PE & RW ONLY	0058	Salem	Primary	\$6,989	\$6,989	\$0	\$0	\$0	
K5 56352	RTE 8 - DEVELOP TO 4 LANES	0058	Salem	Primary	\$22,483	\$22,483	\$0	\$0	\$0	
K6 71836	RTE 73 - APPROACHES AND BRIDGE REPLACEMENT OVER CLARK'S CK	0773	Salem	Secondary	\$4,273	\$0	\$446	\$3,827	\$0	

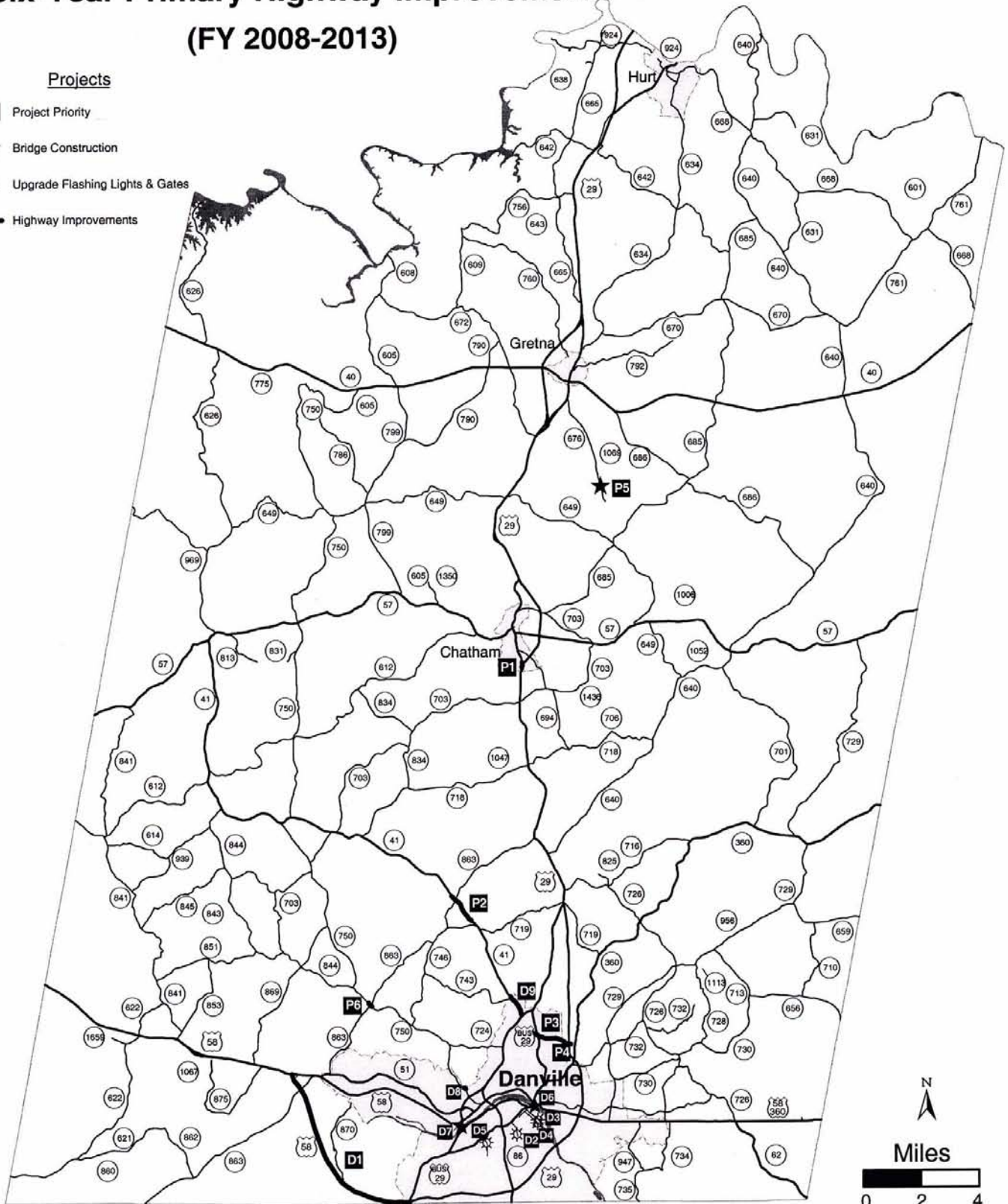
(Values in Thousands of Dollars)

Danville-Pittsylvania County

Six-Year Primary Highway Improvements

(FY 2008-2013)

- Projects**
- I** Project Priority
 - ★ Bridge Construction
 - ⚡ Upgrade Flashing Lights & Gates
 - Highway Improvements



Note: Map only reflects projects with funding allocated for the six-year period.

Prepared by West Piedmont Planning District Commission, July 2007.

Program:
 District:
 Jurisdictions: Residencies:
 Road System:

Route: Zip: UPC: Keyword:

Project Search Results (1 projects found)

Export Report

UPC	Description	Route	District	Road System	Previous	FY08	FY09- FY13		Map It
					(Values in Thousands of Dollars)				
P1 16037	RTE #9 - INTERCHANGE IMPROVEMENTS - PHASE I	0029	Lynchburg	Primary	\$340	\$340	\$0	\$0	\$0
P2 17724	RTE #1 - WIDEN FROM 2 TO 5 LANES WITH CURB & GUTTER	0041	Lynchburg	Primary	\$15,143	\$2,452	\$0	\$12,692	\$0
P3 13511	RTE #65 - FRANKLIN TURNPIKE CONNECTOR	0265	Lynchburg	Primary	\$21,914	\$7,575	\$2,478	\$11,862	\$0
X 79398	RTE #65 - STREAM MITIGATION (ENV.)	0265	Lynchburg	Primary	\$47	\$47	\$0	\$0	\$0
AM 79955	RTE #65 - FRANKLIN TURNPIKE CONNECTOR	0265	Lynchburg	Primary	\$13,013	\$708	\$2,734	\$9,570	\$0
P5 82516	RTE #76 - BRIDGE REPL & APPR OVER WHITEHORN CREEK	0676	Lynchburg	Secondary	\$2,995	\$0	\$0	\$2,516	\$479
P6 81238	RTE #50 - IMPROVE VERTICAL ALIGNMENT	0750	Lynchburg	Secondary	\$304	\$410	\$0	\$0	

VDOT



All P

Program:
District:
Jurisdictions:
Residencies:
Road System:

Route Zip UPC Keyword

Export Report

D1	17372	ROUTE 58 - PE & RW ONLY FOR 4 LNS ON NEW LOCATION	0058	Lynchburg	Primary	\$15,608	\$15,604	\$0	\$0	\$4	
D2	71433	HOLBROOK STREET - UPGRADE FLASHING LIGHTS & GATES		Lynchburg	Rail	\$162	\$162	\$0	\$0	\$0	
D3	71434	LYNN STREET - INSTALL CANTILEVER FLASHING LIGHTS & GATES		Lynchburg	Rail	\$239	\$239	\$0	\$0	\$0	
D4	71435	MONUMENT STREET - UPGRADE FLASHING LIGHTS AND GATES		Lynchburg	Rail	\$250	\$250	\$0	\$0	\$0	
D5	71436	WOODING AVENUE - UPGRADE FLASHING LIGHTS AND GATES		Lynchburg	Rail	\$224	\$224	\$0	\$0	\$0	
D6	12521	WORTHAM STREET - BRIDGE DEMOLITION		Lynchburg	Urban	\$4,465	\$4,510	\$0	\$0		
D7	17740	PIEDMONT DRIVE - INCLUDING PARALLEL ROBERTSON BRIDGE		Lynchburg	Urban	\$55,068	\$8,764	\$2,224	\$18,874	\$25,205	
D8	52513	MOUNT CROSS ROAD - INSTALL LEFT TURN LANE SB		Lynchburg	Urban	\$138	\$138	\$0	\$0	\$0	
D9	14614	RTE 1 - WIDEN TO 4 LANES UNDIVIDED, CURB, GUTTER & SIDEWALK	0041	Lynchburg	Urban	\$16,057	\$12,757	\$2,117	\$1,183	\$0	